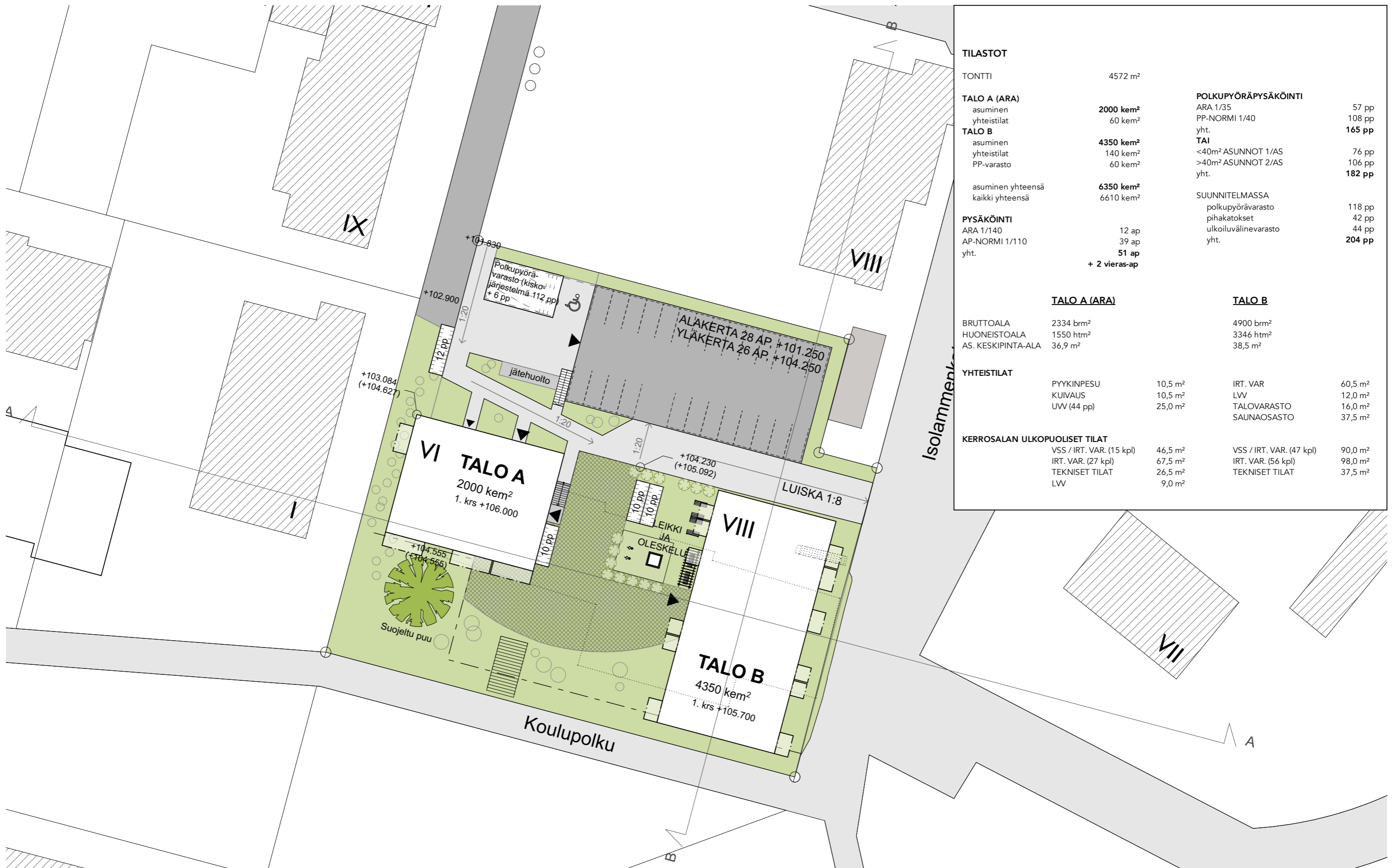


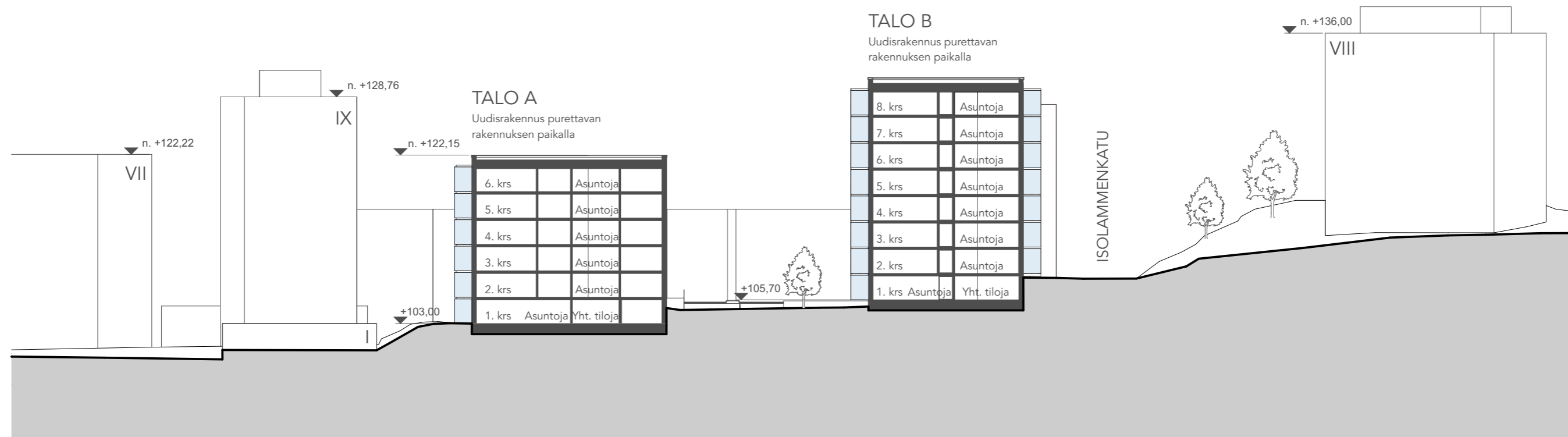


KAUKAJÄRVI KESKISENKATU

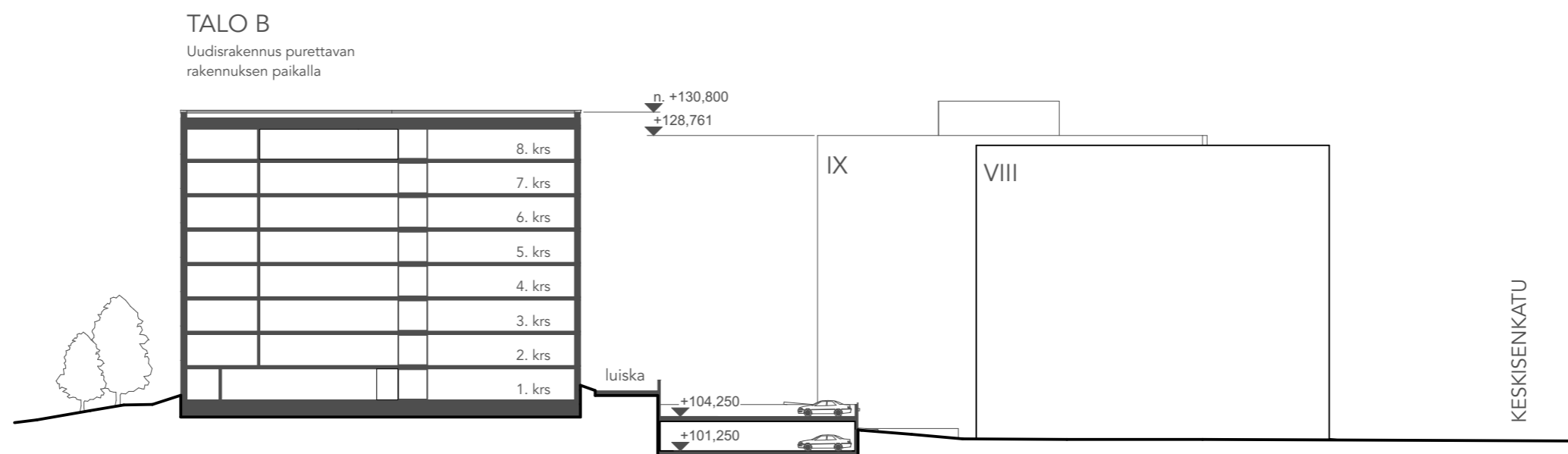


TILASTOT			
TONTTI	4572 m ²		
TALO A (ARA)	2000 kem²		
asuminen	60 kem ²		
yhteistilat			
TALO B	4350 kem²		
asuminen	140 kem ²		
yhteistilat	60 kem ²		
PP-varasto			
asuminen yhteensä	6350 kem²		
kaikki yhteensä	6610 kem ²		
PYSÄKÖINTI			
ARA 1/140	12 ap		
AP-NORMI 1/110	39 ap		
yht.	51 ap		
	+ 2 vieras-ap		
		POLKUPYÖRÄPYSÄKÖINTI	
		ARA 1/35	57 pp
		PP-NORMI 1/40	108 pp
		yht.	165 pp
		TAI	
		<40m ² ASUNNOT 1/AS	76 pp
		>40m ² ASUNNOT 2/AS	106 pp
		yht.	182 pp
		SUUNNITELMASSA	
		polkupyörävarasto	118 pp
		pihakatokset	42 pp
		ulkoiluvälinevarasto	44 pp
		yht.	204 pp
		TALO A (ARA)	
BRUTTOALA	2334 brm ²	TALO B	
HUONEISTOALA	1550 htm ²	4900 brm ²	
AS. KESKIPINTA-ALA	36,9 m ²	3346 htm ²	
		38,5 m ²	
YHTEISTILAT			
PYYKINPESU	10,5 m ²	IRT. VAR	60,5 m ²
KUIVAUS	10,5 m ²	LW	12,0 m ²
UVV (44 pp)	25,0 m ²	TALOVARASTO	16,0 m ²
		SAUNAOSASTO	37,5 m ²
KERROSALAN ULKOPUOLISET TILAT			
VSS / IRT. VAR. (15 kpl)	46,5 m ²	VSS / IRT. VAR. (47 kpl)	90,0 m ²
IRT. VAR. (27 kpl)	67,5 m ²	IRT. VAR. (56 kpl)	98,0 m ²
TEKNISET TILAT	26,5 m ²	TEKNISET TILAT	37,5 m ²
LW	9,0 m ²		



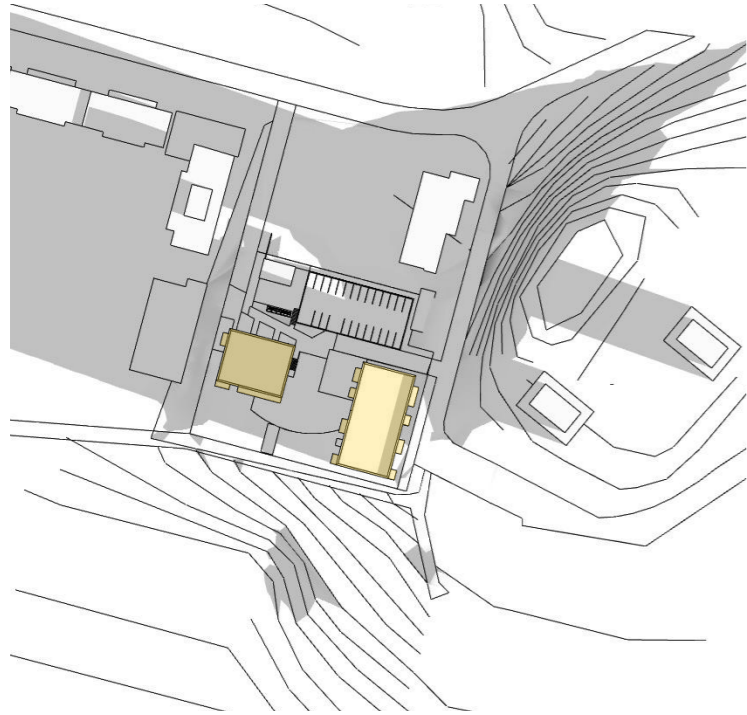


Leikkaus A-A

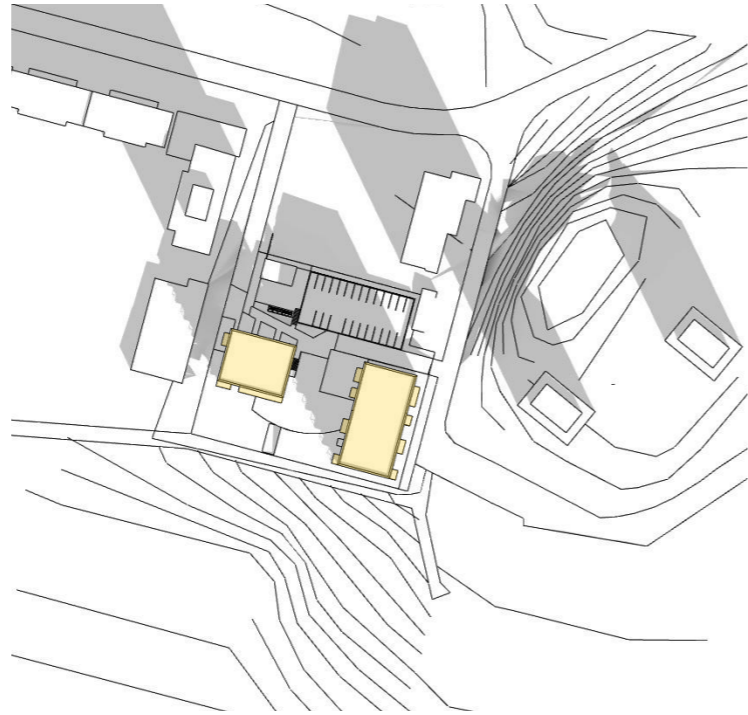


Leikkaus B-B

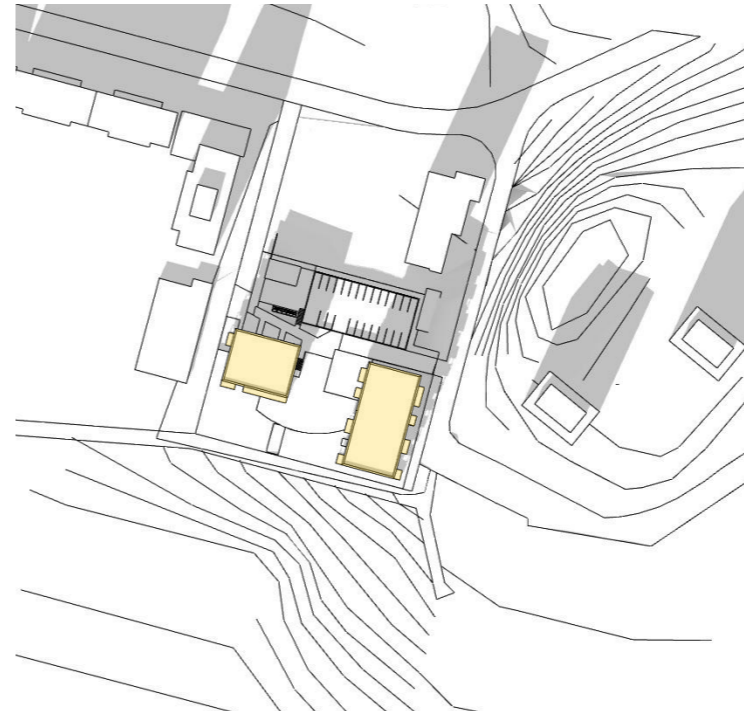
MAALISKUU



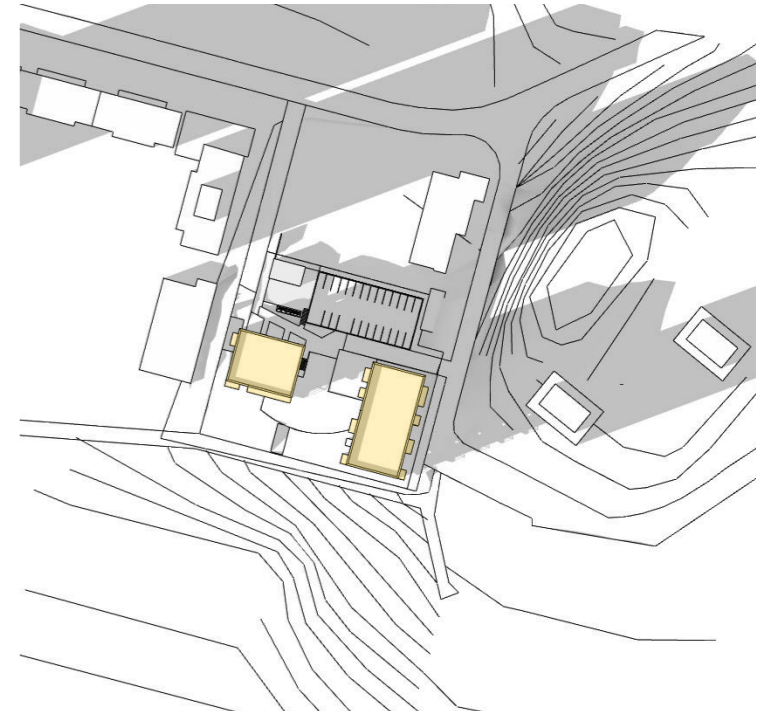
9:00



12:00

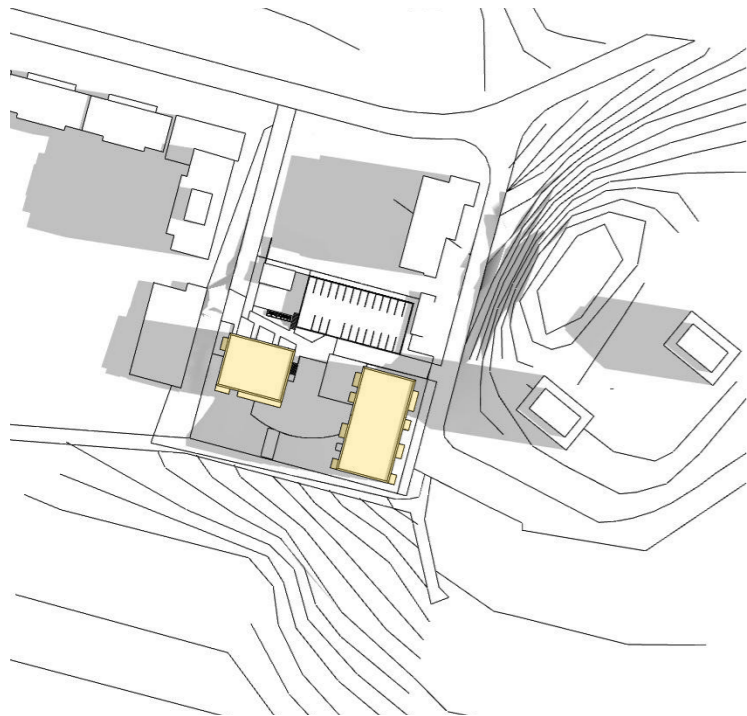


15:00

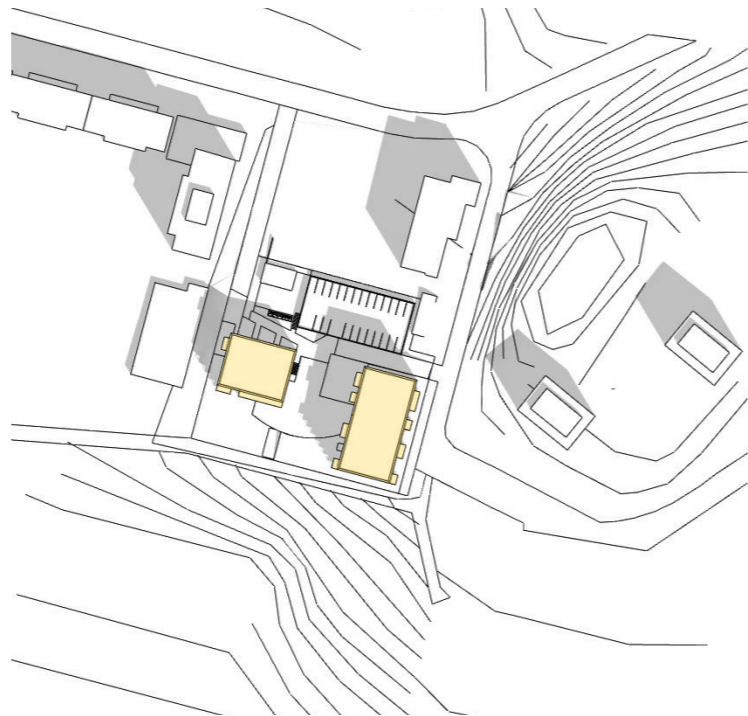


18:00

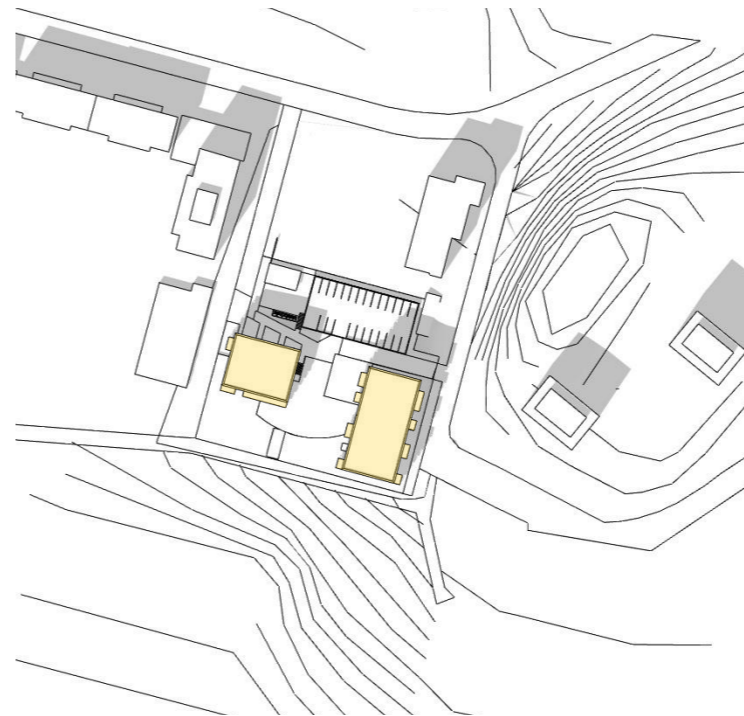
KESÄKUU



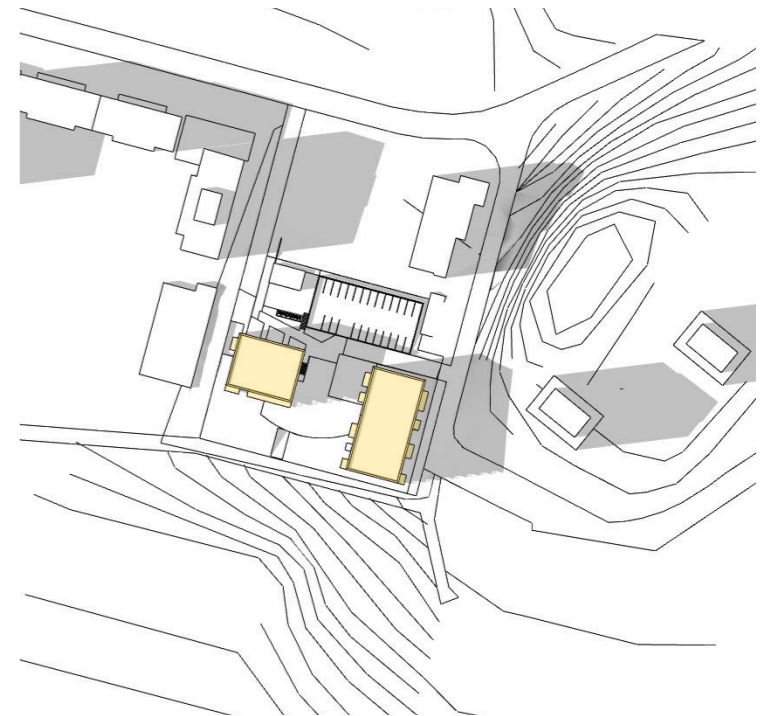
9:00



12:00

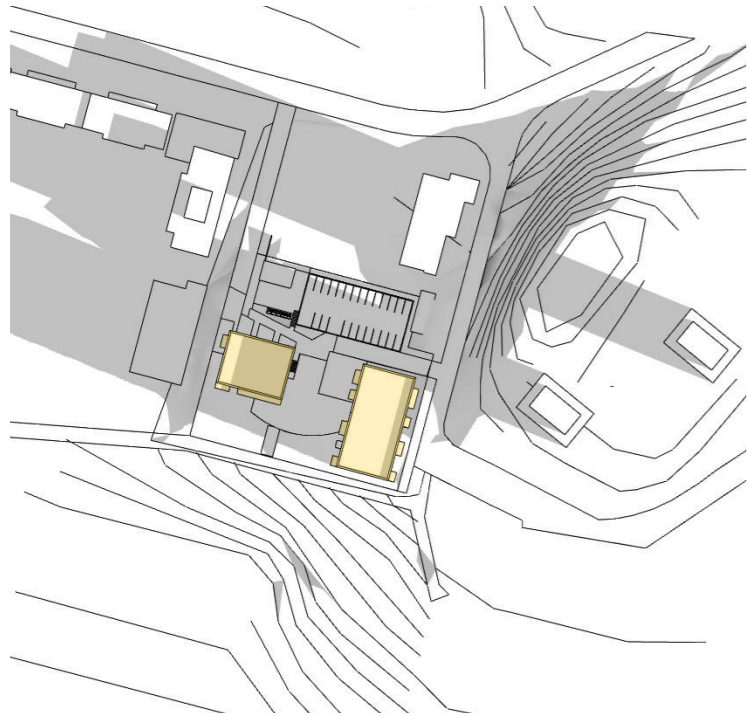


15:00

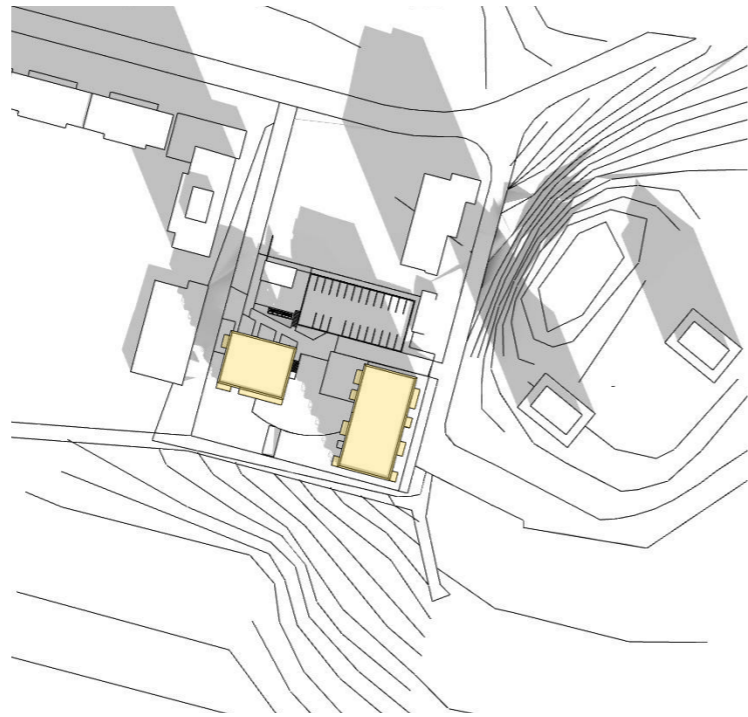


18:00

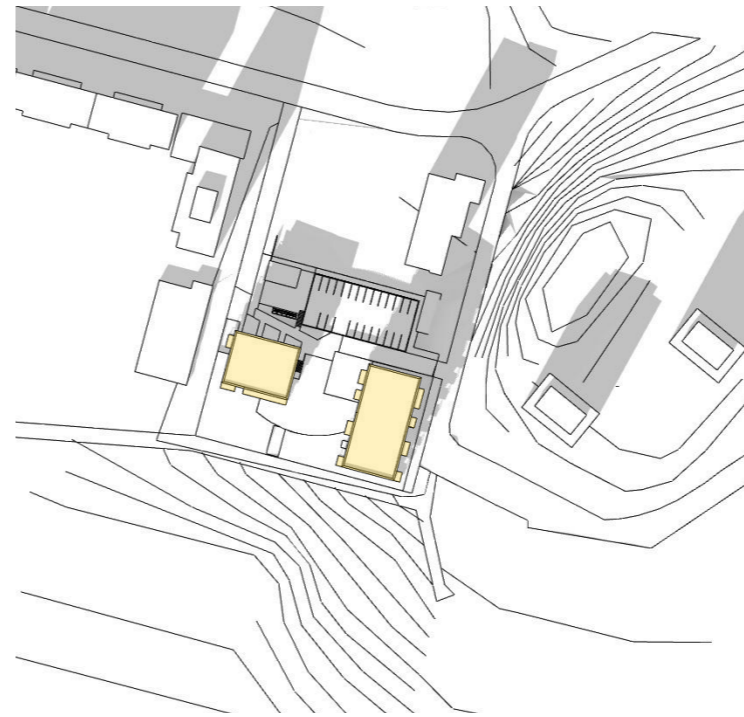
SYYSKUU



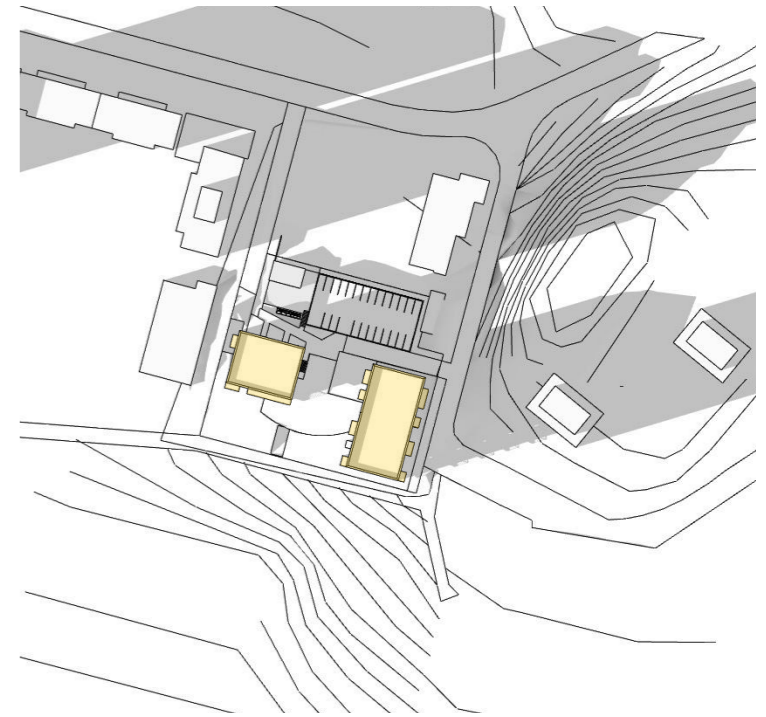
9:00



12:00



15:00

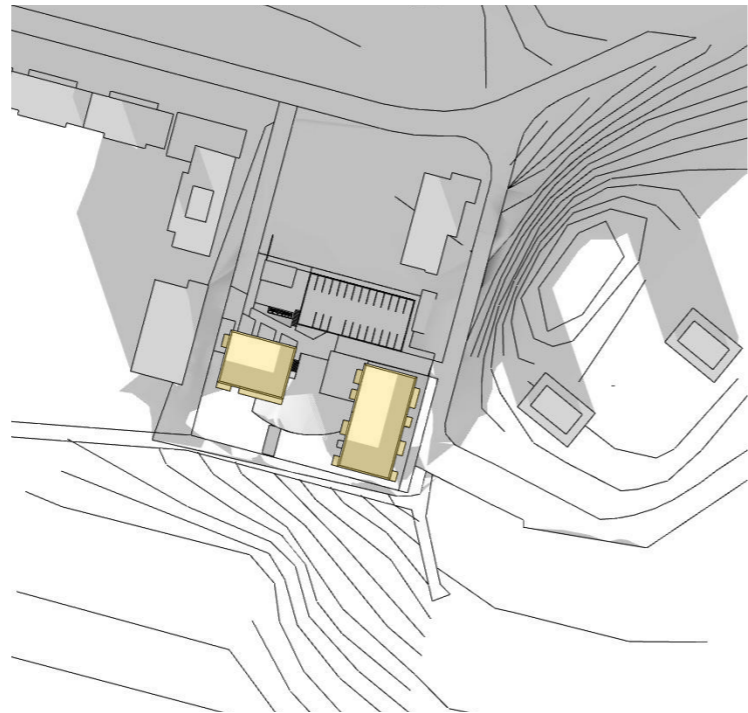


18:00

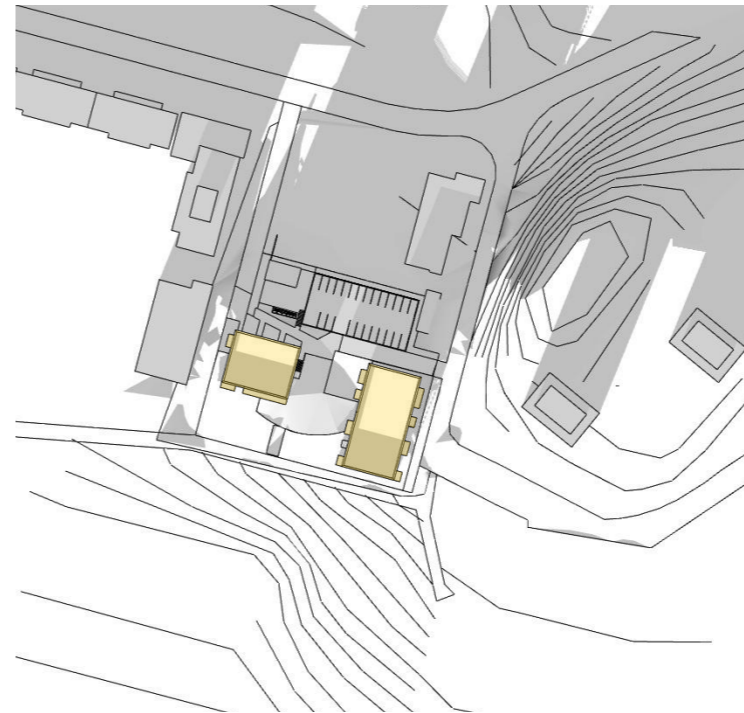
JOULUKUU



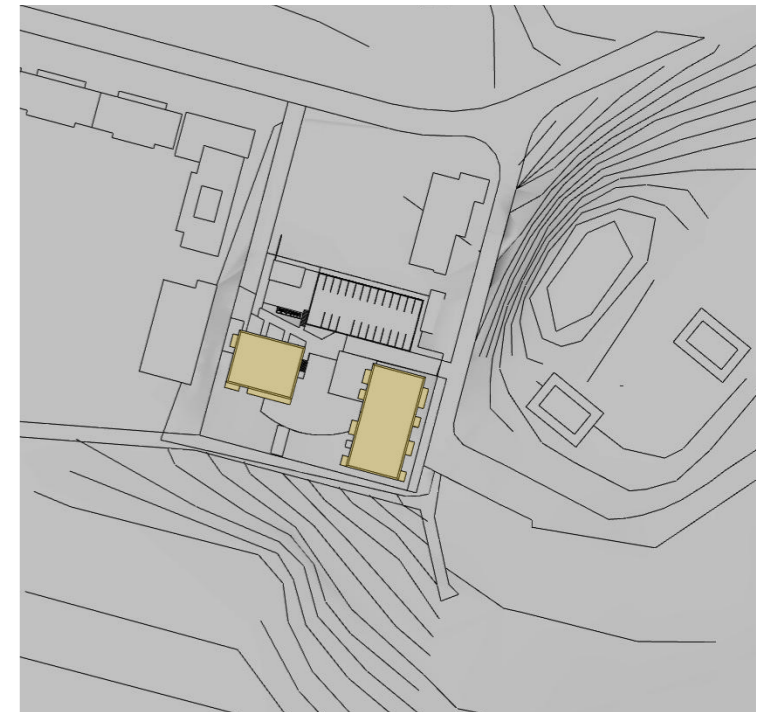
9:00



12:00

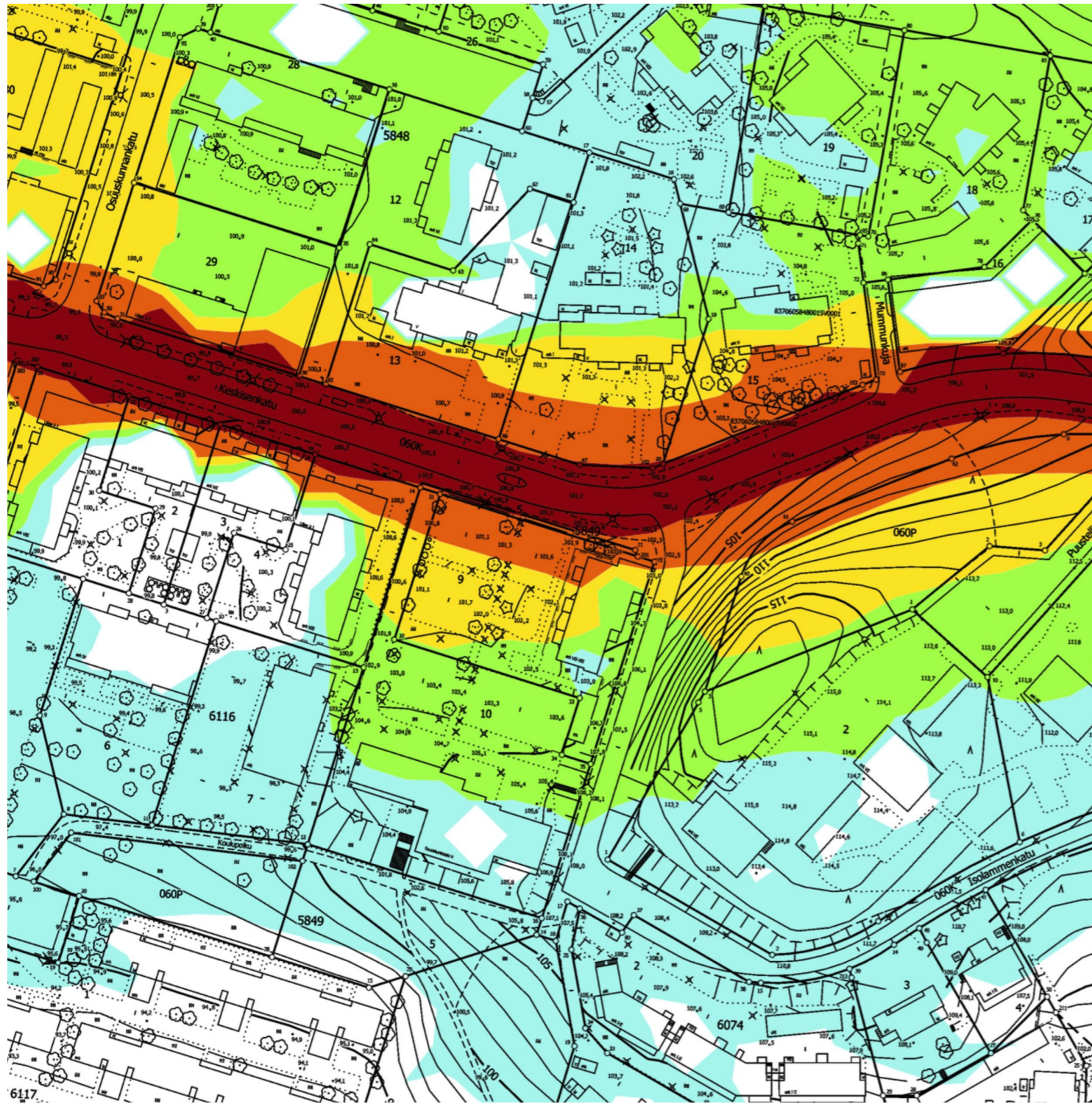


15:00

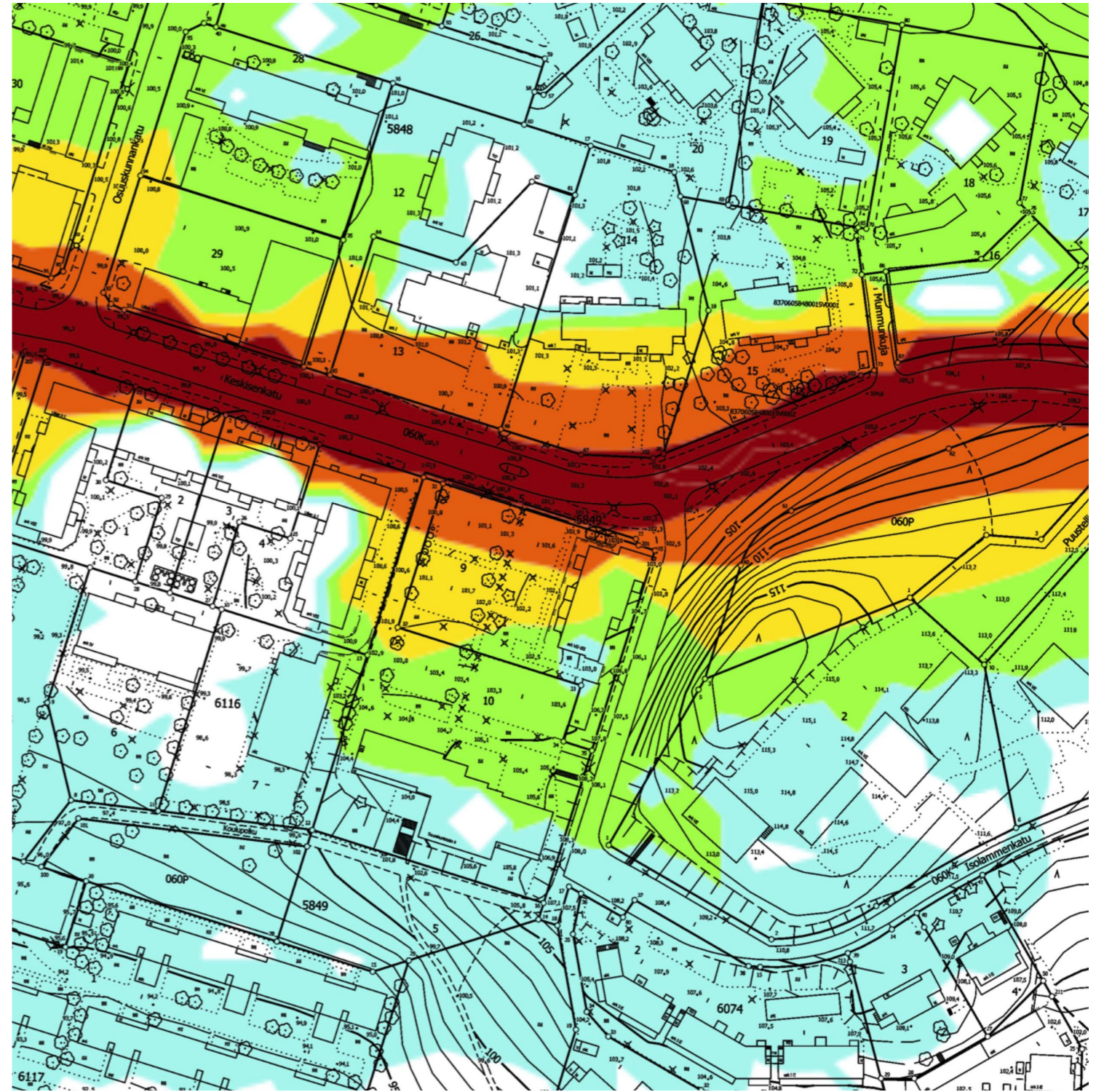


18:00

NYKYTILANNE



2040



- 65-70 dB
- 60-65 dB
- 55-60 dB
- 50-55 dB
- 45-50 dB



PIHANÄKYMÄ
1034 Kaukajärvi Keskisenkatu 20, Pohjola
4.9.2019